

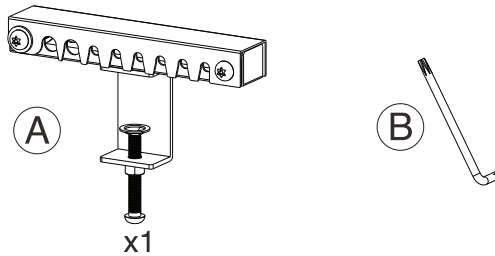


Cabling Enclosure for Lenovo Think Tiny PC

PC-TINYCABE

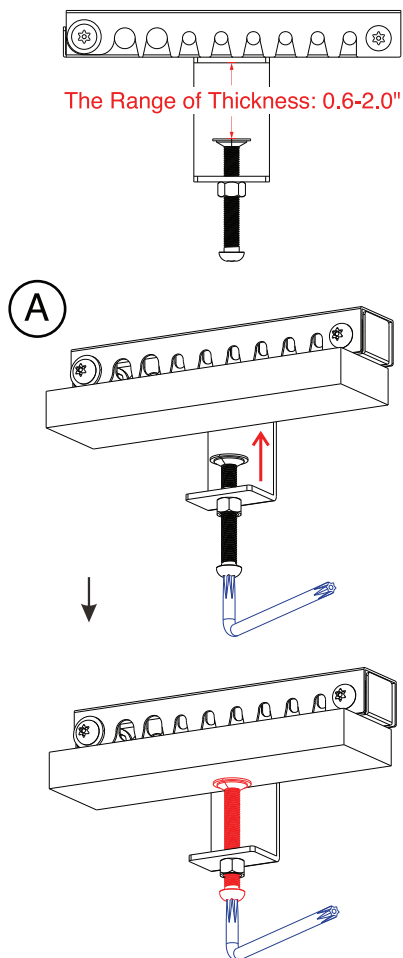
INSTRUCTION - MANUAL

CONTENTS:



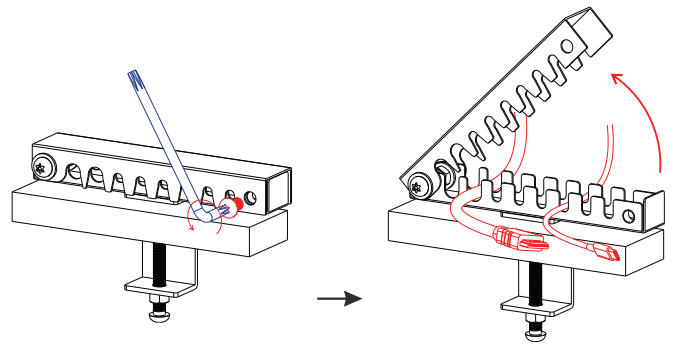
INSTALLATION:

1. How to Mount to Table

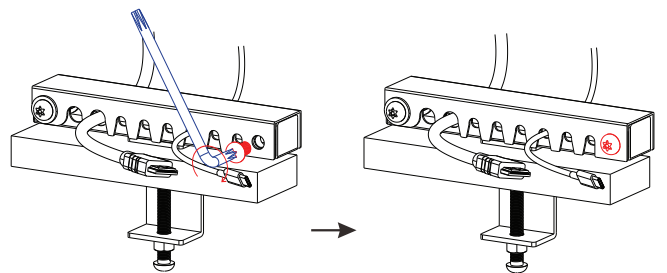


1A - Using the provided tool rotate and loosen the vertical screw as illustrated above. Place the C-clamp at the edge of desired table. Using same tool, rotate until clamp is right against bottom of table, secured and tightened.

2. When Inserting Cables:



1A - Align the VESA holes at the bottom of the floor stand body (A), the additional weighted base (D) and the floor stand base (B) as illustrated.



2A - Using included specialty tool, completely remove one of the horizontal, front facing screws. Open the cable holder component as shown. Place all the desired cables to be secured and organized in between the grooves. Close the top component and place back original screw with included tool until securely tightened.