

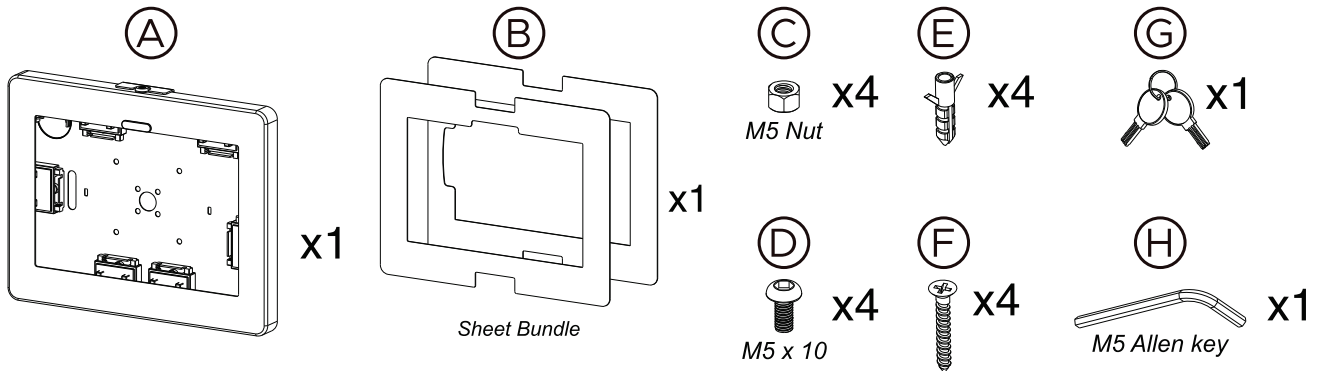


Premium Locking Wall Mount Black with 6PCS Clips + 2 PCS Black Sheets

PAD-PARAW / PAD-PARAWW / PAD-PARAWS

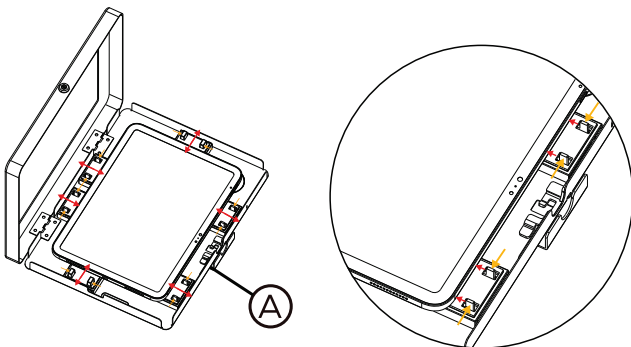
INSTRUCTION - MANUAL

CONTENTS:



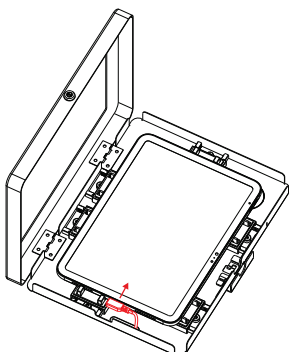
INSTALLATION:

1-Placing Tablet into Enclosure



1A. Start by extending the adjustable clips all the way to the edge. As shown in orange, you pinch the two vertical pieces and then you can slide them inward or outward. You want to slide all of the as far out to the edge to start.

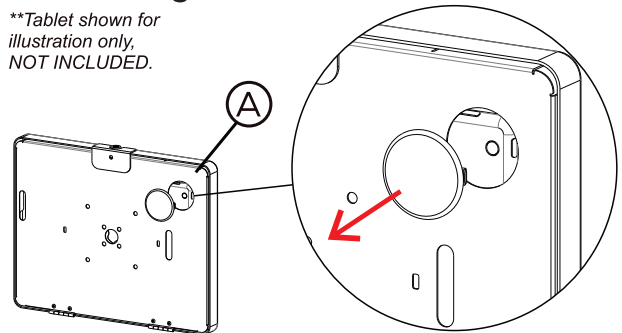
1B. Place the tablet in the center of the case. Now pinch the vertical pieces on each clip (shown in orange) and slide them inward towards the tablet. Make sure the vertical piece on each adjustable clip is right on the edge of the tablet securely and snug. You may need to go back and forth to make sure the tablet screen is as closely aligned to the enclosure cutout as possible.



1C. Plug in the charging cable (not included) and route the cable out the back hole as illustrated.

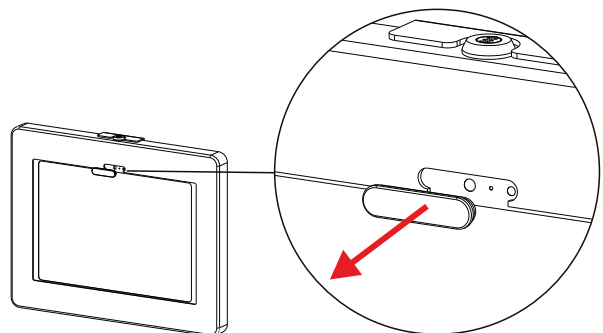
2-Removing Back Covers

****Tablet shown for illustration only, NOT INCLUDED.**



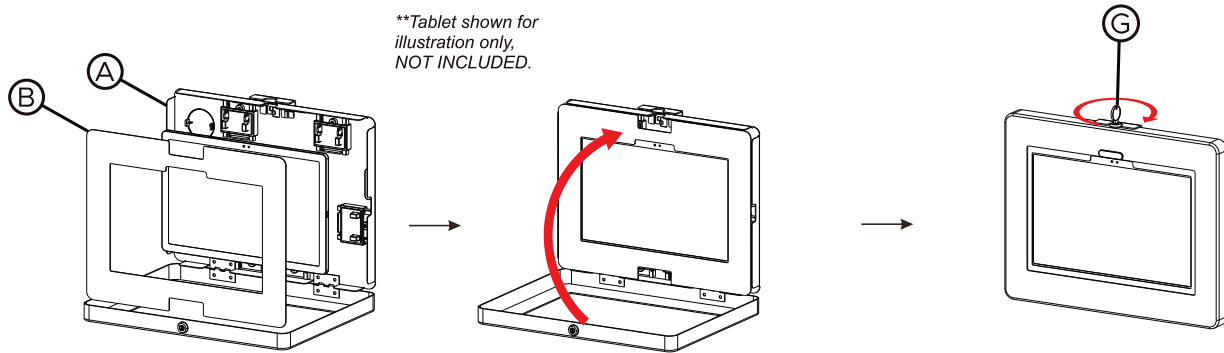
2A. When installing device into the enclosure, identify where the camera is. Then simply remove and pop out the cover prior to mounting or setting up tablet to properly expose camera.

3- Removing Front Cover



3A. Remove the cover as illustrated to use tablet with front camera exposed as needed.

4-Placing Black Sheet Insert into Enclosure



4A. Lay-in correct masking insert from bundle (B) as needed for the correct setup for your device.

4B. Once the tablet device is set up, close the front lid of the enclosure. Insert the key (G) in the keyhole at the edge of the enclosure. Rotate and lock it in place.

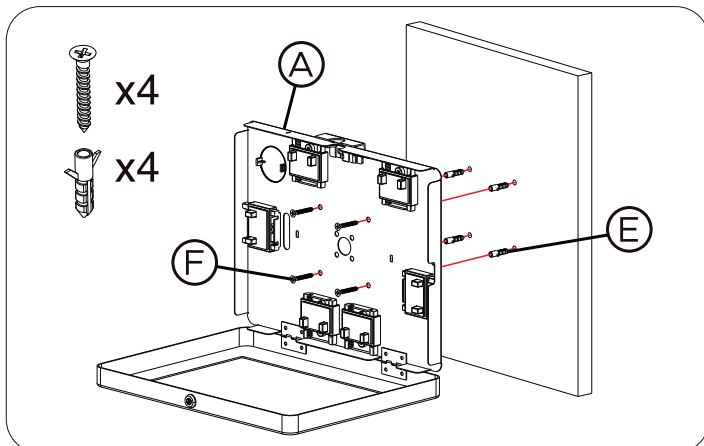
DEVICE & SHEET COMPATIBILITY LIST

SHEET 5 : Samsung Tab S6 Lite 2024, Lenovo Tab K10 2021, Lenovo Tab M10 Plus 2020

SHEET 4 : Galaxy Tab A8

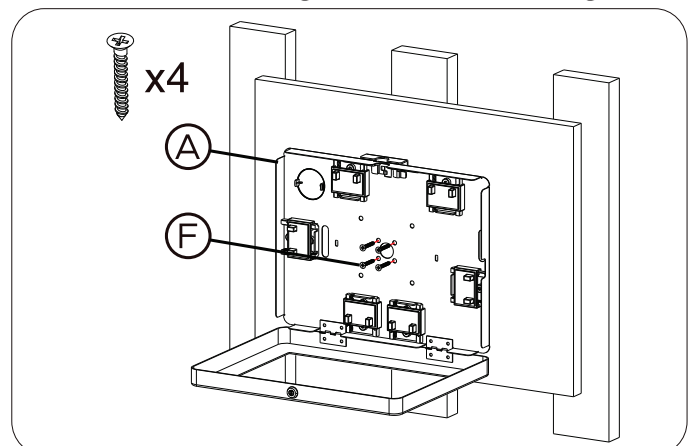
NO SHEET NEEDED : For all other compatible devices

5-When Mounting to Wall Using Anchors



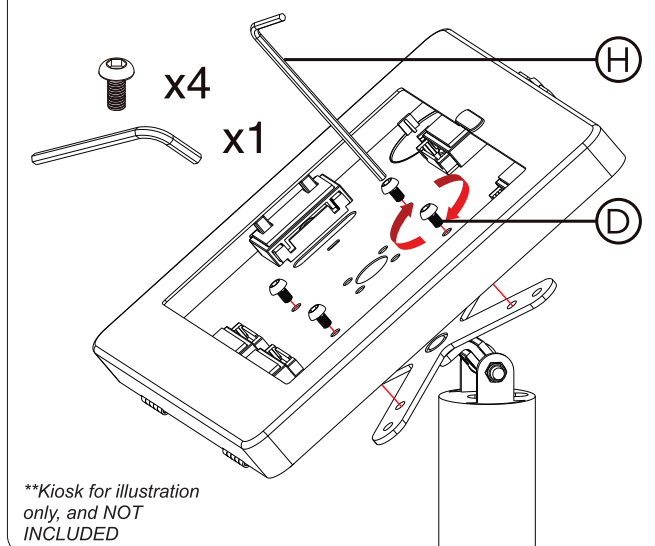
5A. Insert the (4) wall plugs (E) to the wall pre-drilled holes. Then, align VESA holes as shown above to the drilled holes and screw in the (4) screws (F) using a screwdriver tool (not included) until securely tightened.

6-When Mounting to Wall Not Using Anchors



6A. Hold enclosure at the desired mounting location. Rotate in screws (F) with screwdriver tool (not included) until securely tightened.

7-Attaching Enclosure to a VESA Compatible Device



7A. Align enclosure holes to VESA plate holes. Rotate the screws (D) above using provided allen key tool (H) until securely tightened.